

Dati generali

General data

Prodotte a norme DIN 3015, le staffe di fissaggio vengono fornite in diversi materiali
Manufactured to DIN 3015, the collars clamps are manufactured in:

- Polipropilene copolimero - con semi-collari sagomati (su richiesta anche con interno liscio). -
 Per le serie standard, pesante e doppia.
Polypropylene with ribbed clamp halve (on request smooth) - For standard, heavy-duty and double series.
- Poliammide autoestinguente - (Nylon 6-6 caricato al 20% con fibra di vetro, autoestinguente VO) - Per le serie standard, pesante e doppia.
Polyamide - (Nylon 6-6 loaded with 20% of fi breglass, self-extinguishing VO) - For standard, heavy-duty and double series.
- Gomma - Per le serie standard, pesante e doppia.
Rubber - For standard, heavy-duty and double series.
- Alluminio - Per le serie standard e pesante.
Aluminium - for standard and heavy-duty series.

Gli altri componenti delle staffe vengono prodotti di serie in
The other metallic components of the clamps are manufactured in:

- Acciaio FE 35 - piastre superiori, inferiori e binari di fissaggio.
Steel FE 35 - lower and upper plates; mounting rails.
- Acciaio A6S - viti e rondelle.
Acciaio A6S - viti e rondelle.

A richiesta, tutte le parti metalliche possono essere fornite in Acciaio Inox 304 - Inox 316 -
 Inox 316L.
On request we can produce all metallic parts in stainless steel 304 - 316 and 316L.

Come Ordinare

How to Order

CS **P** 1 - 0064
 SCS **P** 1 - 0064

| | | |
|----------|--|----------------------------|
| P | Polipropilene copolimero / Polypropylene | <i>(versione standard)</i> |
| M | Poliammide autoestinguente / Polyamide | <i>(su richiesta)</i> |
| R | Gomma / Rubber | <i>(su richiesta)</i> |
| A | Alluminio / Aluminium | <i>(su richiesta)</i> |

● ● ● ● ● ● Collari / Clamps

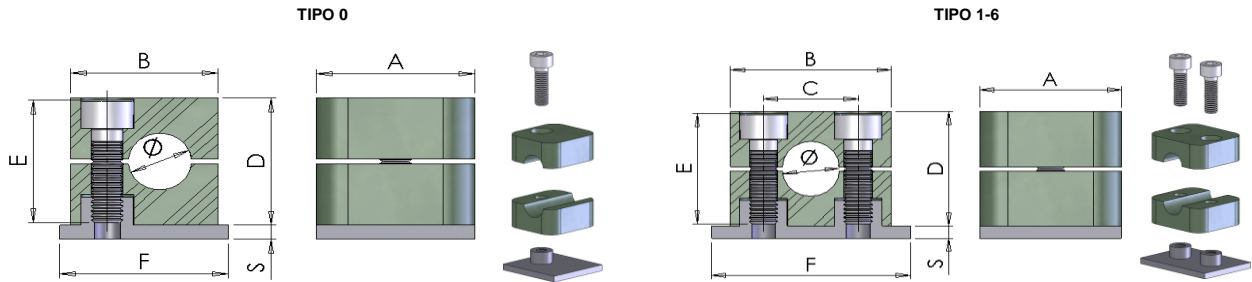
| Pagina / Page | 2 | 3 | 4-6 |
|------------------------|--|---|--|
| standard clamps |  <p>609 Collari serie standard in Polipropilene</p> |  <p>610 Collari serie standard con piastra superiore in Polipropilene</p> |  <p>- Componenti per collari serie standard</p> |
| Pagina / Page | 7 | | 8-10 |
| double clamps |  <p>CDPX Collari doppi in Polipropilene</p> | |  <p>- Componenti per collari doppi</p> |
| Pagina / Page | 11-12 | | 13-16 |
| heavy clamps |  <p>CHPX Collari serie pesante in Polipropilene</p> | |  <p>- Componenti per collari serie pesante</p> |

Dimensions and general characteristics may be changed at any time without prior notice.

Data contained herein are for information purpose only, and it does not enlarge, amend or imply any warranty other than provided by us with the product
Any use of the product not in conformance with our instructions may be dangerous.

609 Collari serie standard in Polipropilene

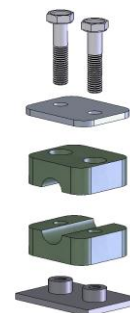
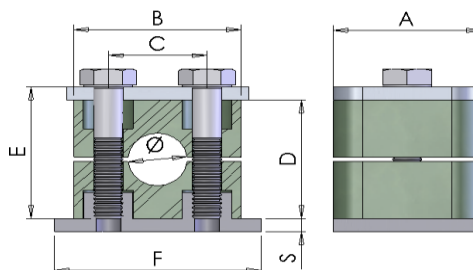
Standard clamps in Polypropilene



| Codice Part number | Ø Tubo | | Tipo Type | Dimensioni | | | | | | | | |
|-----------------------|------------|--------|--------------|------------|----|----|----|----|----|---|--------|--|
| | Ø Tube | | | Dimension | | | | | | | | |
| | Poll./Inch | | | A | B | C | D | F | S | E | | |
| | mm | Gas | O.D. | X | mm | | | | | | | |
| CSP0-0060 | 6,0 | | | | | | | | | | | |
| CSP0-0080 | 8,0 | | 5/16" | 0 | 30 | 28 | - | 27 | 32 | 3 | M 6x20 | |
| CSP0-0100 | 10,0 | 1/8" | | | | | | | | | | |
| CSP0-0120 | 12,0 | | | | | | | | | | | |
| CSP1-0060 | 6,0 | | | | | | | | | | | |
| CSP1-0064 | 6,4 | | 1/4" | | | | | | | | | |
| CSP1-0080 | 8,0 | | 5/16" | 1 | 30 | 34 | 20 | 27 | 42 | 3 | M 6x20 | |
| CSP1-0095 | 9,5 | | 3/8" | | | | | | | | | |
| CSP1-0100 | 10,0 | 1/8" | | | | | | | | | | |
| CSP1-0120 | 12,0 | | | | | | | | | | | |
| CSP2-0127 | 12,7 | | 1/2" | | | | | | | | | |
| CSP2-0135 | 13,5 | 1/4" | | | | | | | | | | |
| CSP2-0140 | 14,0 | | | | | | | | | | | |
| CSP2-0150 | 15,0 | | | | | | | | | | | |
| CSP2-0160 | 16,0 | 5/8" | | 2 | 30 | 40 | 26 | 33 | 48 | 3 | M 6x25 | |
| CSP2-0172 | 17,2 | 3/8" | | | | | | | | | | |
| CSP2-0180 | 18,0 | | | | | | | | | | | |
| CSP2-0190 | 19,0 | | 3/4" | | | | | | | | | |
| CSP3-0190 | 19,0 | | 3/4" | | | | | | | | | |
| CSP3-0200 | 20,0 | | | | | | | | | | | |
| CSP3-0213 | 21,3 | 1/2" | | | | | | | | | | |
| CSP3-0220 | 22,0 | | 7/8" | 3 | 30 | 48 | 33 | 35 | 55 | 3 | M 6x30 | |
| CSP3-0250 | 25,0 | | | | | | | | | | | |
| CSP3-0254 | 25,4 | | 1" | | | | | | | | | |
| CSP4-0269 | 26,9 | 3/4" | | | | | | | | | | |
| CSP4-0280 | 28,0 | | | | | | | | | | | |
| CSP4-0300 | 30,0 | | | 4 | 30 | 57 | 40 | 42 | 62 | 3 | M 6x35 | |
| CSP4-0320 | 32,0 | | 1.1/4" | | | | | | | | | |
| CSP5-0320 | 32,0 | | 1.1/4" | | | | | | | | | |
| CSP5-0337 | 33,7 | 1" | | | | | | | | | | |
| CSP5-0350 | 35,0 | | | | | | | | | | | |
| CSP5-0380 | 38,0 | | 1.1/2" | | | | | | | | | |
| CSP5-0400 | 40,0 | | | 5 | 30 | 68 | 52 | 58 | 74 | 3 | M 6x50 | |
| CSP5-0420 | 42,0 | | | | | | | | | | | |
| CSP5-0424 | 42,4 | 1.1/4" | | | | | | | | | | |
| CSP5-0450 | 45,0 | | | | | | | | | | | |
| CSP6-0445 | 44,5 | | 1.1/4" | | | | | | | | | |
| CSP6-0483 | 48,3 | 1.1/2" | | 6 | 30 | 86 | 66 | 66 | 88 | 3 | M 6x60 | |
| CSP6-0508 | 50,8 | | 2" | | | | | | | | | |

CPPX Collari serie standard con piastra superiore in Polipropilene

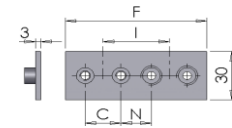
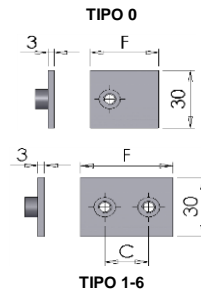
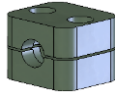
Standard clamps with upper plate in Polypropilene



| Codice Part number | Ø Tubo Ø Tube | | Tipo Type | Dimensioni Dimension | | | | | | | | |
|-----------------------|------------------|--------|--------------|-------------------------|----|----|----|----|----|---|--------|--|
| | Poll./Inch | | | A | B | C | D | F | S | E | | |
| | mm | Gas | | O.D. | X | mm | | | | | | |
| CPP1-0060 | 6,0 | | | | | | | | | | | |
| CPP1-0064 | 6,4 | | 1/4" | | | | | | | | | |
| CPP1-0080 | 8,0 | | 5/16" | 1 | 30 | 34 | 20 | 27 | 42 | 3 | M 6x30 | |
| CPP1-0095 | 9,5 | | 3/8" | | | | | | | | | |
| CPP1-0100 | 10,0 | 1/8" | | | | | | | | | | |
| CPP1-0120 | 12,0 | | | | | | | | | | | |
| CPP2-0127 | 12,7 | | 1/2" | | | | | | | | | |
| CPP2-0135 | 13,5 | 1/4" | | | | | | | | | | |
| CPP2-0140 | 14,0 | | | | | | | | | | | |
| CPP2-0150 | 15,0 | | | | | | | | | | | |
| CPP2-0160 | 16,0 | | 5/8" | 2 | 30 | 40 | 26 | 33 | 48 | 3 | M 6x35 | |
| CPP2-0172 | 17,2 | 3/8" | | | | | | | | | | |
| CPP2-0180 | 18,0 | | | | | | | | | | | |
| CPP2-0190 | 19,0 | | 3/4" | | | | | | | | | |
| CPP3-0190 | 19,0 | | 3/4" | | | | | | | | | |
| CPP3-0200 | 20,0 | | | | | | | | | | | |
| CPP3-0213 | 21,3 | 1/2" | | | | | | | | | | |
| CPP3-0220 | 22,0 | | 7/8" | 3 | 30 | 48 | 33 | 35 | 55 | 3 | M 6x40 | |
| CPP3-0250 | 25,0 | | | | | | | | | | | |
| CPP3-0254 | 25,4 | | 1" | | | | | | | | | |
| CPP4-0269 | 26,9 | 3/4" | | | | | | | | | | |
| CPP4-0280 | 28,0 | | | | | | | | | | | |
| CPP4-0300 | 30,0 | | | 4 | 30 | 57 | 40 | 42 | 62 | 3 | M 6x45 | |
| CPP4-0320 | 32,0 | | 1.1/4" | | | | | | | | | |
| CPP5-0520 | 32,0 | | 1.1/4" | | | | | | | | | |
| CPP5-0337 | 33,7 | 1" | | | | | | | | | | |
| CPP5-0350 | 35,0 | | | | | | | | | | | |
| CPP5-0380 | 38,0 | | 1.1/2" | 5 | 30 | 68 | 52 | 58 | 74 | 3 | M 6x60 | |
| CPP5-0400 | 40,0 | | | | | | | | | | | |
| CPP5-0420 | 42,0 | | | | | | | | | | | |
| CPP5-0424 | 42,4 | 1.1/4" | | | | | | | | | | |
| CPP5-0450 | 45,0 | | | | | | | | | | | |
| CPP6-0445 | 44,5 | | 1.1/4" | | | | | | | | | |
| CPP6-0483 | 48,3 | 1.1/2" | | 6 | 30 | 86 | 66 | 66 | 88 | 3 | M 6x70 | |
| CPP6-0508 | 50,8 | | 2" | | | | | | | | | |

Componenti per collari serie standard

Standard clamps components



| semi-collare in polipropilene | | coppia collari in polipropilene | | piastra inferiore | | piastra inferiore doppia | | | | |
|-------------------------------|-------|---------------------------------|-------|-------------------|---------|--------------------------|---------|---------|---------|-------------------|
| polypropilene clamp-half | | polypropilene clamp body | | lower plate | | double lower plate | | | | |
| | | | | (LPS...) | | (LPDS...) | | | | n° |
| code | price | code | price | F mm | C mm | F mm | C mm | N mm | I mm | collari clamps |
| TIPO 0 | | | | LPS0 | | LPDS0 | | | | |
| SCSP0-0060 | | CCSP0-0060 | | | | | | | | |
| SCSP0-0080 | | CCSP0-0080 | | | | | | | | |
| SCSP0-0100 | | CCSP0-0100 | | 32 | - | 61 | - | - | 30 | 2 |
| SCSP0-0120 | | CCSP0-0120 | | | | | | | | |
| TIPO 1 | | | | LPS1 | | LPDS1 | | | | |
| SCSP1-0060 | | CCSP1-0060 | | | | | | | | |
| SCSP1-0064 | | CCSP1-0064 | | | | | | | | |
| SCSP1-0080 | | CCSP1-0080 | | | | | | | | |
| SCSP1-0095 | | CCSP1-0095 | | 42 | 20 | 81 | 20 | 20 | 40 | 2 |
| SCSP1-0100 | | CCSP1-0100 | | | | | | | | |
| SCSP1-0120 | | CCSP1-0120 | | | | | | | | |
| TIPO 2 | | | | LPS2 | | LPDS2 | | | | |
| SCSP2-0127 | | CCSP2-0127 | | | | | | | | |
| SCSP2-0135 | | CCSP2-0135 | | | | | | | | |
| SCSP2-0140 | | CCSP2-0140 | | | | | | | | |
| SCSP2-0150 | | CCSP2-0150 | | | | | | | | |
| SCSP2-0160 | | CCSP2-0160 | | 48 | 26 | 91 | 26 | 18 | 44 | 2 |
| SCSP2-0172 | | CCSP2-0172 | | | | | | | | |
| SCSP2-0180 | | CCSP2-0180 | | | | | | | | |
| SCSP2-0190 | | CCSP2-0190 | | | | | | | | |
| TIPO 3 | | | | LPS3 | | LPDS3 | | | | |
| SCSP3-0190 | | CCSP3-0190 | | | | | | | | |
| SCSP3-0200 | | CCSP3-0200 | | | | | | | | |
| SCSP3-0213 | | CCSP3-0213 | | | | | | | | |
| SCSP3-0220 | | CCSP3-0220 | | 55 | 33 | 106 | 33 | 19 | 52 | 2 |
| SCSP3-0250 | | CCSP3-0250 | | | | | | | | |
| SCSP3-0254 | | CCSP3-0254 | | | | | | | | |
| TIPO 4 | | | | LPS4 | | LPDS4 | | | | |
| SCSP4-0269 | | CCSP4-0269 | | | | | | | | |
| SCSP4-0280 | | CCSP4-0280 | | | | | | | | |
| SCSP4-0300 | | CCSP4-0300 | | 62 | 40 | 148 | 52 | 23 | 75 | 2 |
| SCSP4-0320 | | CCSP4-0320 | | | | | | | | |
| TIPO 5 | | | | LPS5 | | LPDS5 | | | | |
| SCSP5-0320 | | CCSP5-0320 | | | | | | | | |
| SCSP5-0337 | | CCSP5-0337 | | | | | | | | |
| SCSP5-0350 | | CCSP5-0350 | | | | | | | | |
| SCSP5-0380 | | CCSP5-0380 | | | | | | | | |
| SCSP5-0400 | | CCSP5-0400 | | 74 | 52 | 148 | 52 | 23 | 75 | 2 |
| SCSP5-0420 | | CCSP5-0420 | | | | | | | | |
| SCSP5-0424 | | CCSP5-0424 | | | | | | | | |
| SCSP5-0450 | | CCSP5-0450 | | | | | | | | |
| TIPO 6 | | | | LPS6 | | LPDS6 | | | | |
| SCSP6-0445 | | CCSP6-0445 | | | | | | | | |
| SCSP6-0483 | | CCSP6-0483 | | | | | | | | |
| SCSP6-0508 | | CCSP6-0508 | | 88 | 66 | 177 | 66 | 24 | 90 | 2 |

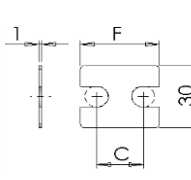
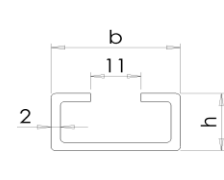
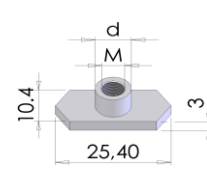

Componenti per collari serie standard

Standard clamps components

| | | TIPO 0 piastra inferiore multipla multiple lower plate | | | | | TIPO 1-6 piastra superiore upper plate | | vite T.C.E.I. T.C.E.I. screws | | vite a testa esagonale hexagonal head screw | | vite a testa esag. allungata high hexagonal head screw | |
|--------|--|---|----|----|----|---------|---|----|----------------------------------|----|--|----|---|----|
| | | (LPMS...) | | | | | (UPS...) | | (VTEIS...) | | (VTES...) | | (VTEAS...) | |
| | | F | C | N | I | n° | F | C | M | E | M | E | M | E |
| | | mm | mm | mm | mm | collari | mm | mm | mm | mm | mm | mm | mm | mm |
| | | LPMS0 | | | | | UPS0 | | VTEIS0 | | VTES0 | | VTEAS0 | |
| TIPO 0 | | 306 | - | - | 30 | 10 | 28 | - | M6 | 20 | M6 | 30 | M6 | 20 |
| TIPO 1 | | 404 | 20 | 20 | 40 | 10 | 37 | 20 | M6 | 20 | M6 | 30 | M6 | 20 |
| TIPO 2 | | 447 | 26 | 18 | 44 | 10 | 43 | 26 | M6 | 25 | M6 | 35 | M6 | 25 |
| TIPO 3 | | 525 | 33 | 19 | 52 | 10 | 50 | 33 | M6 | 30 | M6 | 40 | M6 | 30 |
| TIPO 4 | | 375 | 52 | 53 | 75 | 5 | 57 | 40 | M6 | 35 | M6 | 45 | M6 | 35 |
| TIPO 5 | | 375 | 52 | 23 | 75 | 5 | 69 | 52 | M6 | 50 | M6 | 60 | M6 | 50 |
| TIPO 6 | | 447 | 66 | 24 | 90 | 5 | 83 | 66 | M6 | 60 | M6 | 70 | M6 | 60 |

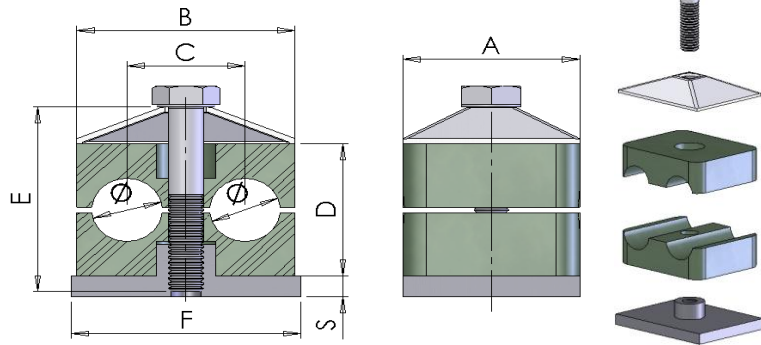
Componenti per collari serie standard

Standard clamps components

|  | |  | |  | |  |
|---|--------------|---|--------------|---|------|---|
| piastra sup. di sicurezza | | binari portanti (spessore 2 mm.) | | dado fissaggio binari | | rondella |
| security upper plate | | rail (thickness 2 mm) | | Rail Nut | | flat washer |
| (SUPS...) | | (BINS...) | | (FIXS...) | | (RONS...) |
| F mm | C mm | b mm | h mm | M | d mm | |
| TIPO 0 | SUPS0 | | | | | |
| | 28 | - | | | | |
| TIPO 1 | SUPS1 | | | | | |
| | 34 | 20 | | | | |
| TIPO 2 | SUPS2 | | BINS1 | | | |
| | 41 | 26 | 28 | 11 | | |
| TIPO 3 | SUPS3 | | BINS2 | FIXS1 | | RONS1 |
| | 47 | 33 | 28 | 14 | M6 | M6 |
| TIPO 4 | SUPS4 | | BINS3 | | | |
| | 57 | 40 | | | | |
| TIPO 5 | SUPS5 | | | | | |
| | 67 | 52 | 28 | 30 | | |
| TIPO 6 | SUPS6 | | | | | |
| | 82 | 66 | | | | |

610 Collari doppi in Polipropilene


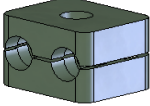
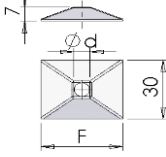
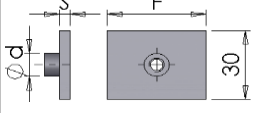
Double Polypropylene Clamps



| Codice Part number | Ø Tubo Ø Tube | | | Tipo Type | Dimensioni Dimension | | | | | | |
|-----------------------|------------------|--------|--------|--------------|-------------------------|-----|----|----|-----|---|--------|
| | Poll./Inch | | X | | A | B | C | D | F | S | E |
| | mm | Gas | | | O.D. | mm | | | | | |
| CDP1-0060 | 6,0 | | | 1 | 30 | 37 | 20 | 25 | 37 | 3 | M 6x35 |
| CDP1-0064 | 6,4 | | 1/4" | | | | | | | | |
| CDP1-0080 | 8,0 | | 5/16" | | | | | | | | |
| CDP1-0095 | 9,5 | | 3/8" | | | | | | | | |
| CDP1-0100 | 10,0 | 1/8" | | | | | | | | | |
| CDP1-0120 | 12,0 | | | 2 | 30 | 53 | 29 | 26 | 55 | 5 | M 6x35 |
| CDP2-0127 | 12,7 | | 1/2" | | | | | | | | |
| CDP2-0135 | 13,5 | 1/4" | | | | | | | | | |
| CDP2-0140 | 14,0 | | | | | | | | | | |
| CDP2-0150 | 15,0 | | 5/8" | | | | | | | | |
| CDP2-0160 | 16,0 | | | | | | | | | | |
| CDP2-0172 | 17,2 | 3/8" | | 3 | 30 | 67 | 36 | 37 | 70 | 5 | M 6x45 |
| CDP2-0180 | 18,0 | | | | | | | | | | |
| CDP3-0190 | 19,0 | | 3/4" | | | | | | | | |
| CDP3-0200 | 20,0 | 1/2" | | | | | | | | | |
| CDP3-0213 | 21,3 | | 7/8" | | | | | | | | |
| CDP3-0220 | 22,0 | | | | | | | | | | |
| CDP3-0250 | 25,0 | | 1" | 4 | 30 | 82 | 45 | 42 | 85 | 5 | M 6x50 |
| CDP3-0254 | 25,4 | | | | | | | | | | |
| CDP4-0269 | 26,9 | 3/4" | | | | | | | | | |
| CDP4-0280 | 28,0 | | | 5 | 30 | 106 | 56 | 54 | 110 | 5 | M 6x60 |
| CDP4-0300 | 30,0 | | | | | | | | | | |
| CDP5-0320 | 32,0 | | 1.1/4" | | | | | | | | |
| CDP5-0337 | 33,7 | 1" | | | | | | | | | |
| CDP5-0350 | 35,0 | | | | | | | | | | |
| CDP5-0380 | 38,0 | | 1.1/2" | | | | | | | | |
| CDP5-0400 | 40,0 | | | | | | | | | | |
| CDP5-0420 | 42,0 | | | | | | | | | | |
| CDP5-0424 | 42,4 | 1.1/4" | | | | | | | | | |

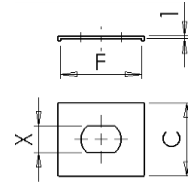
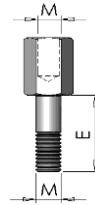
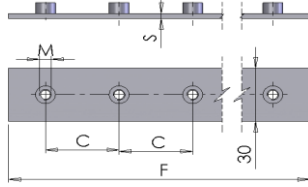
Componenti per collari doppi

Double clamps components

|  | |  | |  | |  | | |
|---|------------|---|-------|--|----|---|----|----|
| semi-collare in polipropilene | | coppia collari in polipropilene | | piastra superiore | | piastra inferiore | | |
| polypropilene clamp-half | | polypropilene clamp body | | upper plate | | lower plate | | |
| code | price | code | price | (UPD...) | | (LPD...) | | |
| | | | | F | Ød | F | Ød | S |
| | | | | mm | mm | mm | mm | mm |
| TIPO 1 | SCDP1-0060 | CCDP1-0060 | | UPD1 | | LPD1 | | |
| | SCDP1-0064 | CCDP1-0064 | | | | | | |
| | SCDP1-0080 | CCDP1-0080 | | | | | | |
| | SCDP1-0095 | CCDP1-0095 | | 35 | 7 | 37 | 12 | 3 |
| | SCDP1-0100 | CCDP1-0100 | | | | | | |
| | SCDP1-0120 | CCDP1-0120 | | | | | | |
| TIPO 2 | SCDP2-0127 | CCDP2-0127 | | UPD2 | | LPD2 | | |
| | SCDP2-0135 | CCDP2-0135 | | | | | | |
| | SCDP2-0140 | CCDP2-0140 | | | | | | |
| | SCDP2-0150 | CCDP2-0150 | | 52 | 9 | 55 | 14 | 5 |
| | SCDP2-0160 | CCDP2-0160 | | | | | | |
| | SCDP2-0172 | CCDP2-0172 | | | | | | |
| TIPO 3 | SCDP3-0190 | CCDP3-0190 | | UPD3 | | LPD3 | | |
| | SCDP3-0200 | CCDP3-0200 | | | | | | |
| | SCDP3-0213 | CCDP3-0213 | | | | | | |
| | SCDP3-0220 | CCDP3-0220 | | 66 | 9 | 70 | 14 | 5 |
| | SCDP3-0254 | CCDP3-0254 | | | | | | |
| TIPO 4 | SCDP4-0269 | CCDP4-0269 | | UPD4 | | LPD4 | | |
| | SCDP4-0280 | CCDP4-0280 | | | | | | |
| | SCDP4-0300 | CCDP4-0300 | | 81 | 9 | 85 | 14 | 5 |
| TIPO 5 | SCDP5-0320 | CCDP5-0320 | | UPD5 | | LPD5 | | |
| | SCDP5-0337 | CCDP5-0337 | | | | | | |
| | SCDP5-0350 | CCDP5-0350 | | | | | | |
| | SCDP5-0380 | CCDP5-0380 | | 105 | 9 | 110 | 14 | 5 |
| | SCDP5-0400 | CCDP5-0400 | | | | | | |
| | SCDP5-0420 | CCDP5-0420 | | | | | | |
| | SCDP5-0424 | CCDP5-0424 | | | | | | |

Componenti per collari doppi

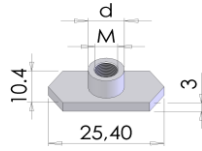
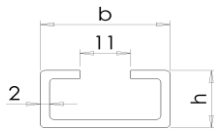
Double clamps components



| | piastra inferiore multipla multiple lower plate | | | | | vite a testa esagonale hexagonal head screw | | vite a testa esag. allungata high hexagonal head screw | | piastra sup. di sicurezza security upper plate | | |
|--------|--|---------|---------|----|-------------------------|--|---------|--|---------|---|---------|---------|
| | (LPMD...) | | | | n° collari clamps | (VTED...) | | (VTEAD...) | | (SUPD...) | | |
| | F mm | C mm | S mm | M | | M | E mm | M | E mm | F mm | C mm | X mm |
| TIPO 1 | LPMD1 | | | | | VTED1 | | VTEAD1 | | SUPD1 | | |
| | 200 | 40 | 3 | M6 | 5 | M6 | 35 | M6 | 20 | 30 | 30 | 11 |
| TIPO 2 | LPMD2 | | | | | VTED2 | | VTEAD2 | | SUPD2 | | |
| | 290 | 58 | 5 | M8 | 5 | M8 | 35 | M8 | 20 | | | |
| TIPO 3 | LPMD3 | | | | | VTED3 | | VTEAD3 | | | | |
| | 360 | 72 | 5 | M8 | 5 | M8 | 45 | M8 | 29 | | | |
| TIPO 4 | LPMD4 | | | | | VTED4 | | VTEAD4 | | | | |
| | 450 | 90 | 5 | M8 | 5 | M8 | 50 | M8 | 34 | | | |
| TIPO 5 | LPMD5 | | | | | VTED5 | | VTEAD5 | | | | |
| | 560 | 112 | 5 | M8 | 5 | M8 | 60 | M8 | 47 | | | |

Componenti per collari doppi

Double clamps components



| binari portanti (spessore 2 mm.) rail (thickness 2 mm) | | dado fissaggio binari Rail Nut | |
|--|---------|-----------------------------------|---------|
| (BIND...) | | (FIXD...) | |
| b mm | h mm | M | d mm |
| | | FIXD1 | |
| | | M6 | 12 |
| BIND1 | | | |
| 28 | 11 | | |
| BIND2 | | FIXD2 | |
| 28 | 14 | M8 | 14 |
| BIND3 | | | |
| 28 | 30 | | |

TIPO 1

TIPO 2

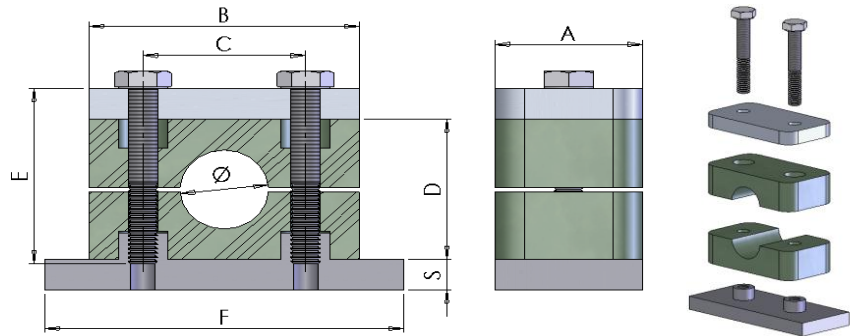
TIPO 3

TIPO 4

TIPO 5

CHPX Collari serie pesante in Polipropilene

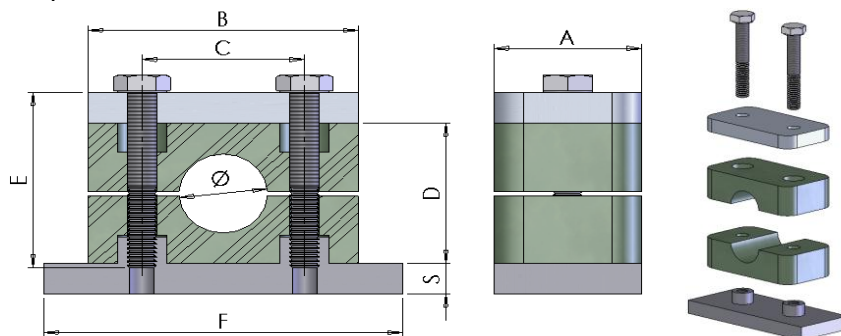
Heavy duty Polypropilene Clamps



| Codice Part number | Ø Tubo | | Tipo Type | Dimensioni | | | | | | | | |
|-----------------------|--------|--------|--------------|------------|------|-----|----|----|-----|----|----------|---|
| | Ø Tube | | | Dimension | | | | | | | | |
| | mm | Gas | | Pol./Inch | O.D. | X | A | B | C | D | F | S |
| CHP1-0060 | 6,0 | | | | | | | | | | | |
| CHP1-0064 | 6,4 | | 1/4" | | | | | | | | | |
| CHP1-0080 | 8,0 | | 5/16" | | | | | | | | | |
| CHP1-0095 | 9,5 | | 3/8" | | | | | | | | | |
| CHP1-0100 | 10,0 | 1/8" | | | | | | | | | | |
| CHP1-0120 | 12,0 | | | | | | | | | | | |
| CHP1-0127 | 12,7 | | 1/2" | 1 | 30 | 55 | 33 | 32 | 73 | 8 | M 6x35 | |
| CHP1-0135 | 13,5 | 1/4" | | | | | | | | | | |
| CHP1-0140 | 14,0 | | | | | | | | | | | |
| CHP1-0150 | 15,0 | | | | | | | | | | | |
| CHP1-0160 | 16,0 | | 5/8" | | | | | | | | | |
| CHP1-0172 | 17,2 | 3/8" | | | | | | | | | | |
| CHP1-0180 | 18,0 | | | | | | | | | | | |
| CHP2-0190 | 19,0 | | 3/4" | | | | | | | | | |
| CHP2-0200 | 20,0 | | | | | | | | | | | |
| CHP2-0213 | 21,3 | 1/2" | | | | | | | | | | |
| CHP2-0220 | 22,0 | | 7/8" | | | | | | | | | |
| CHP2-0250 | 25,0 | | | 2 | 30 | 70 | 45 | 48 | 85 | 8 | M 6x35 | |
| CHP2-0254 | 25,4 | | 1" | | | | | | | | | |
| CHP2-0269 | 26,9 | 3/4" | | | | | | | | | | |
| CHP2-0280 | 28,0 | | | | | | | | | | | |
| CHP2-0300 | 30,0 | | | | | | | | | | | |
| CHP3-0300 | 30,0 | | | | | | | | | | | |
| CHP3-0320 | 32,0 | | 1.1/4" | | | | | | | | | |
| CHP3-0337 | 33,7 | 1" | | | | | | | | | | |
| CHP3-0350 | 35,0 | | | | | | | | | | | |
| CHP3-0380 | 38,0 | | 1.1/2" | 3 | 30 | 85 | 60 | 60 | 10 | 8 | M 6x45 | |
| CHP3-0400 | 40,0 | | | | | | | | | | | |
| CHP3-0420 | 42,0 | | | | | | | | | | | |
| CHP3-0424 | 42,4 | 1.1/4" | | | | | | | | | | |
| CHP4-0380 | 38,0 | | 1.1/2" | | | | | | | | | |
| CHP4-0420 | 42,0 | | | | | | | | | | | |
| CHP4-0424 | 42,4 | 1.1/4" | | 4 | 45 | 120 | 90 | 90 | 140 | 10 | M 12x100 | |
| CHP4-0445 | 44,5 | | 1.3/4" | | | | | | | | | |
| CHP4-0483 | 48,3 | 1.1/2" | | | | | | | | | | |

CHPX Collari serie pesante in Polipropilene

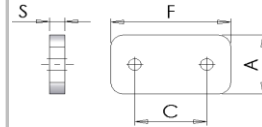
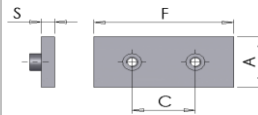
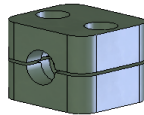
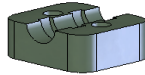
Heavy duty Polypropilene Clamps



| Codice Part number | Ø Tubo | | | Tipo Type | Dimensioni | | | | | | | |
|-----------------------|--------|------------|--------|--------------|------------|-----|-----|-----|-----|----|----------|--|
| | Ø Tube | | X | | Dimension | | | | | | | |
| | mm | Poll./Inch | | | A | B | C | D | F | S | E | |
| CHP4-0500 | 50,0 | | | | | | | | | | | |
| CHP4-0508 | 50,8 | | 2" | | | | | | | | | |
| CHP4-0550 | 55,0 | | | | | | | | | | | |
| CHP4-0570 | 57,0 | | 2.1/4" | 4 | 45 | 120 | 90 | 90 | 140 | 10 | M 12x100 | |
| CHP4-0603 | 60,3 | 2" | 2.1/2" | | | | | | | | | |
| CHP4-0635 | 63,5 | | 2.1/2" | | | | | | | | | |
| CHP4-0650 | 65,0 | | | | | | | | | | | |
| CHP4-0700 | 70,0 | | 2.3/4" | | | | | | | | | |
| CHP5-0650 | 65,0 | | | | | | | | | | | |
| CHP5-0700 | 70,0 | | | | | | | | | | | |
| CHP5-0750 | 75,0 | | | | | | | | | | | |
| CHP5-0761 | 76,1 | 2.1/2" | 3" | 5 | 60 | 152 | 122 | 120 | 180 | 10 | M 16x130 | |
| CHP5-0800 | 80,0 | | 3.1/4" | | | | | | | | | |
| CHP5-0825 | 82,5 | | 3.1/2" | | | | | | | | | |
| CHP5-0889 | 88,9 | 3" | 3.1/2" | | | | | | | | | |
| CHP6-0899 | 89,9 | 3" | 3.1/2" | | | | | | | | | |
| CHP6-1000 | 100,0 | | | | | | | | | | | |
| CHP6-1016 | 101,6 | 3.1/2" | 4" | 6 | 80 | 205 | 168 | 170 | 225 | 15 | M 20x190 | |
| CHP6-1080 | 108,0 | | 4.1/4" | | | | | | | | | |
| CHP6-1143 | 114,3 | 4" | 4.1/2" | | | | | | | | | |
| CHP6-1270 | 127,0 | 4.1/2" | 5" | | | | | | | | | |
| CHP6-1330 | 133,0 | | 5.1/2" | | | | | | | | | |
| CHP7-1330 | 133,0 | | 5.1/4" | | | | | | | | | |
| CHP7-1397 | 139,7 | 5" | 5.1/2" | 7 | 90 | 250 | 205 | 200 | 270 | 15 | M 24x220 | |
| CHP7-1524 | 152,4 | 5.1/2" | 6" | | | | | | | | | |
| CHP7-1650 | 165,0 | | 6.1/2" | | | | | | | | | |
| CHP7-1683 | 168,3 | 6" | | | | | | | | | | |
| CHP8-1683 | 168,3 | 6" | | | | | | | | | | |
| CHP8-1778 | 177,8 | | 7" | 8 | 120 | 320 | 265 | 270 | 340 | 25 | M 30x300 | |
| CHP8-1937 | 193,7 | | 7.5/8" | | | | | | | | | |
| CHP8-2160 | 216,0 | | 8.1/2" | | | | | | | | | |
| CHP8-2191 | 219,1 | 8" | | | | | | | | | | |

Componenti per collari serie pesante

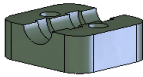
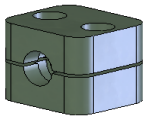
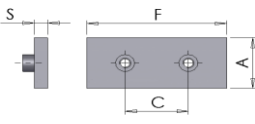
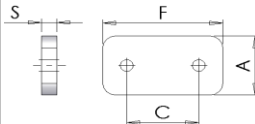
Heavy clamps components



| semi-collare in polipropilene | | coppia collari in polipropilene | | piastra inferiore | | | | piastra superiore | | | | |
|-------------------------------|------------|---------------------------------|-------|-------------------|----|-----|----|-------------------|----|-----|----|----|
| polypropilene clamp-half | | polypropilene clamp body | | lower plate | | | | upper plate | | | | |
| code | price | code | price | (LPH...) | | | | (UPH...) | | | | |
| | | | | A | F | C | S | A | F | C | S | |
| | | | | mm | mm | mm | mm | mm | mm | mm | mm | |
| | | | | LPH1 | | | | UPH1 | | | | |
| TIPO 1 | SCHP1-0060 | CCHP1-0060 | | | | | | | | | | |
| | SCHP1-0064 | CCHP1-0064 | | | | | | | | | | |
| | SCHP1-0080 | CCHP1-0080 | | | | | | | | | | |
| | SCHP1-0095 | CCHP1-0095 | | | | | | | | | | |
| | SCHP1-0100 | CCHP1-0100 | | | | | | | | | | |
| | SCHP1-0120 | CCHP1-0120 | | | | | | | | | | |
| | SCHP1-0127 | CCHP1-0127 | | | 30 | 75 | 33 | 8 | 30 | 55 | 33 | 8 |
| | SCHP1-0135 | CCHP1-0135 | | | | | | | | | | |
| | SCHP1-0140 | CCHP1-0140 | | | | | | | | | | |
| | SCHP1-0150 | CCHP1-0150 | | | | | | | | | | |
| | SCHP1-0160 | CCHP1-0160 | | | | | | | | | | |
| SCHP1-0172 | CCHP1-0172 | | | | | | | | | | | |
| SCHP1-0180 | CCHP1-0180 | | | | | | | | | | | |
| TIPO 2 | SCHP2-0190 | CCHP2-0190 | | | | | | | | | | |
| | SCHP2-0200 | CCHP2-0200 | | | | | | | | | | |
| | SCHP2-0213 | CCHP2-0213 | | | | | | | | | | |
| | SCHP2-0220 | CCHP2-0220 | | | | | | | | | | |
| | SCHP2-0250 | CCHP2-0250 | | | | | | | | | | |
| | SCHP2-0254 | CCHP2-0254 | | | 30 | 87 | 45 | 8 | 30 | 70 | 45 | 8 |
| | SCHP2-0269 | CCHP2-0269 | | | | | | | | | | |
| | SCHP2-0280 | CCHP2-0280 | | | | | | | | | | |
| SCHP2-0300 | CCHP2-0300 | | | | | | | | | | | |
| SCHP2-0300 | CCHP2-0300 | | | | | | | | | | | |
| TIPO 3 | SCHP3-0300 | CCHP3-0300 | | | | | | | | | | |
| | SCHP3-0320 | CCHP3-0320 | | | | | | | | | | |
| | SCHP3-0337 | CCHP3-0337 | | | | | | | | | | |
| | SCHP3-0350 | CCHP3-0350 | | | | | | | | | | |
| | SCHP3-0380 | CCHP3-0380 | | | 30 | 102 | 60 | 8 | 30 | 85 | 60 | 8 |
| | SCHP3-0400 | CCHP3-0400 | | | | | | | | | | |
| SCHP3-0420 | CCHP3-0420 | | | | | | | | | | | |
| SCHP3-0424 | CCHP3-0424 | | | | | | | | | | | |
| TIPO 4 | SCHP4-0380 | CCHP4-0380 | | | | | | | | | | |
| | SCHP4-0420 | CCHP4-0420 | | | | | | | | | | |
| | SCHP4-0424 | CCHP4-0424 | | | | | | | | | | |
| | SCHP4-0445 | CCHP4-0445 | | | 45 | 140 | 90 | 10 | 45 | 120 | 90 | 10 |
| | SCHP4-0483 | CCHP4-0483 | | | | | | | | | | |



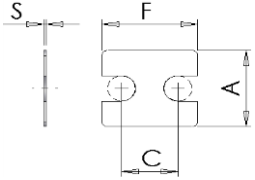
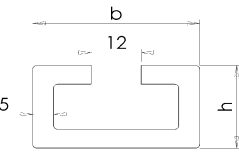
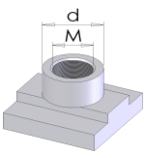
Componenti per collari serie pesante

Heavy clamps components

|  | |  | |  | | | |  | | | |
|---|------------|---|-------|--|------|------|------|---|------|------|------|
| semi-collare in polipropilene | | coppia collari in polipropilene | | piastra inferiore | | | | piastra superiore | | | |
| polypropilene clamp-half | | polypropilene clamp body | | lower plate | | | | upper plate | | | |
| code | price | code | price | (LPH...) | | | | (UPH...) | | | |
| | | | | A mm | F mm | C mm | S mm | A mm | F mm | C mm | S mm |
| | | | | LPH4 | | | | UPH4 | | | |
| TIPO 4 | SCHP4-0500 | CCHP4-0500 | | 45 | 140 | 90 | 10 | 45 | 120 | 90 | 10 |
| | SCHP4-0508 | CCHP4-0508 | | | | | | | | | |
| | SCHP4-0550 | CCHP4-0550 | | | | | | | | | |
| | SCHP4-0570 | CCHP4-0570 | | | | | | | | | |
| | SCHP4-0603 | CCHP4-0603 | | | | | | | | | |
| | SCHP4-0635 | CCHP4-0635 | | | | | | | | | |
| | SCHP4-0650 | CCHP4-0650 | | | | | | | | | |
| | SCHP4-0700 | CCHP4-0700 | | | | | | | | | |
| TIPO 5 | SCHP5-0650 | CCHP5-0650 | | 60 | 180 | 122 | 10 | 60 | 152 | 122 | 10 |
| | SCHP5-0700 | CCHP5-0700 | | | | | | | | | |
| | SCHP5-0750 | CCHP5-0750 | | | | | | | | | |
| | SCHP5-0761 | CCHP5-0761 | | | | | | | | | |
| | SCHP5-0800 | CCHP5-0800 | | | | | | | | | |
| | SCHP5-0825 | CCHP5-0825 | | | | | | | | | |
| SCHP5-0889 | CCHP5-0889 | | | | | | | | | | |
| TIPO 6 | SCHP6-0899 | CCHP6-0899 | | 80 | 225 | 168 | 15 | 80 | 205 | 168 | 15 |
| | SCHP6-1000 | CCHP6-1000 | | | | | | | | | |
| | SCHP6-1016 | CCHP6-1016 | | | | | | | | | |
| | SCHP6-1080 | CCHP6-1080 | | | | | | | | | |
| | SCHP6-1143 | CCHP6-1143 | | | | | | | | | |
| | SCHP6-1270 | CCHP6-1270 | | | | | | | | | |
| SCHP6-1330 | CCHP6-1330 | | | | | | | | | | |
| TIPO 7 | SCHP7-1330 | CCHP7-1330 | | 90 | 270 | 205 | 15 | 90 | 250 | 205 | 15 |
| | SCHP7-1397 | CCHP7-1397 | | | | | | | | | |
| | SCHP7-1524 | CCHP7-1524 | | | | | | | | | |
| | SCHP7-1650 | CCHP7-1650 | | | | | | | | | |
| | SCHP7-1683 | CCHP7-1683 | | | | | | | | | |
| TIPO 8 | SCHP8-1683 | CCHP8-1683 | | 120 | 340 | 265 | 25 | 120 | 320 | 265 | 25 |
| | SCHP8-1778 | CCHP8-1778 | | | | | | | | | |
| | SCHP8-1937 | CCHP8-1937 | | | | | | | | | |
| | SCHP8-2160 | CCHP8-2160 | | | | | | | | | |
| | SCHP8-2191 | CCHP8-2191 | | | | | | | | | |

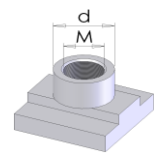
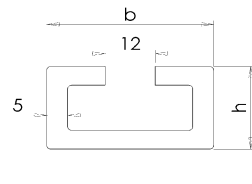
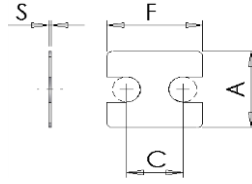
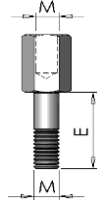
Componenti per collari serie pesante

Heavy clamps components

| |  |  |  |  |  |
|--------|---|---|---|--|---|
| | vite a testa esagonale | vite a testa esag. allungata | piastra superiore di sicurezza | binari portanti (spessore 5 mm.) | dado fissaggio binari |
| | hexagonal head screw | high hexagonal head screw | security upper plate | rail (thickness 5 mm) | rail nut |
| | (VTEH...) | (VTEAH...) | (SUPH...) | (BINH...) | (FIXH...) |
| | M | M | A | b | M |
| | E | E | F | h | d |
| | mm | mm | C | mm | mm |
| | | | S | | |
| | | | | | |
| | | | | | |
| TIPO 1 | VTEH1 | VTEAH1 | SUPH1 | | |
| | M10 | M10 | 30 | | |
| | 45 | 26 | 55 | | |
| TIPO 2 | VTEH2 | VTEAH2 | SUPH2 | BINH1 | FIXH1 |
| | M10 | M10 | 30 | 40 | M10 |
| | 60 | 41 | 70 | 22 | 18 |
| TIPO 3 | VTEH3 | VTEAH3 | SUPH3 | | |
| | M10 | M10 | 30 | | |
| | 70 | 52 | 85 | | |

Componenti per collari serie pesante

Heavy clamps components



| | vite a testa esagonale | | vite a testa esag. allungata | | piastra superiore di sicurezza | | | | binari portanti (spessore 5 mm.) | | dado fissaggio binari | |
|--------|------------------------|------|------------------------------|------|--------------------------------|------|------|------|----------------------------------|------|-----------------------|------|
| | hexagonal head screw | | high hexagonal head screw | | security upper plate | | | | rail (thickness 5 mm) | | rail nut | |
| | (VTEH...) | | (VTEAH...) | | (SUPH...) | | | | (BINH...) | | (FIXH...) | |
| | M | E mm | M | E mm | A mm | F mm | C mm | S mm | b mm | h mm | M | d mm |
| TIPO 4 | VTEH4 | | VTEAH4 | | SUPH4 | | | | BINH1 | | FIXH2 | |
| | M12 | 100 | M12 | 83 | 45 | 120 | 90 | 10 | | | | |
| TIPO 5 | VTEH5 | | VTEAH5 | | SUPH5 | | | | 40 22 | | M12 20 | |
| | M16 | 130 | M16 | 110 | 60 | 152 | 122 | 10 | | | | |
| TIPO 6 | VTEH6 | | | | | | | | | | | |
| | M20 | 190 | - | - | - | - | - | - | - | - | - | - |
| TIPO 7 | VTEH7 | | | | | | | | | | | |
| | M24 | 220 | - | - | - | - | - | - | - | - | - | - |
| TIPO 8 | VTEH8 | | | | | | | | | | | |
| | M30 | 300 | - | - | - | - | - | - | - | - | - | - |